



# Exposure to chemicals and chemical risk

Dr Crispin Halsall

Reader in Environmental Chemistry, LEC



# Quantitative risk assessment – the heart of chemicals management

Hazard identification

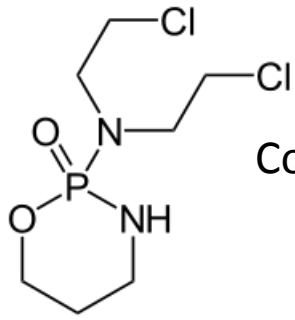


Exposure assessment



Risk characterisation





Common anticancer drug:  
Cyclophosphamide



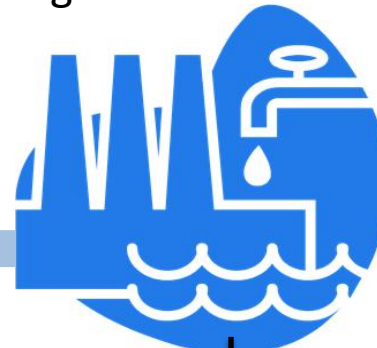
Hospital use



Out patients



Sewage Treatment



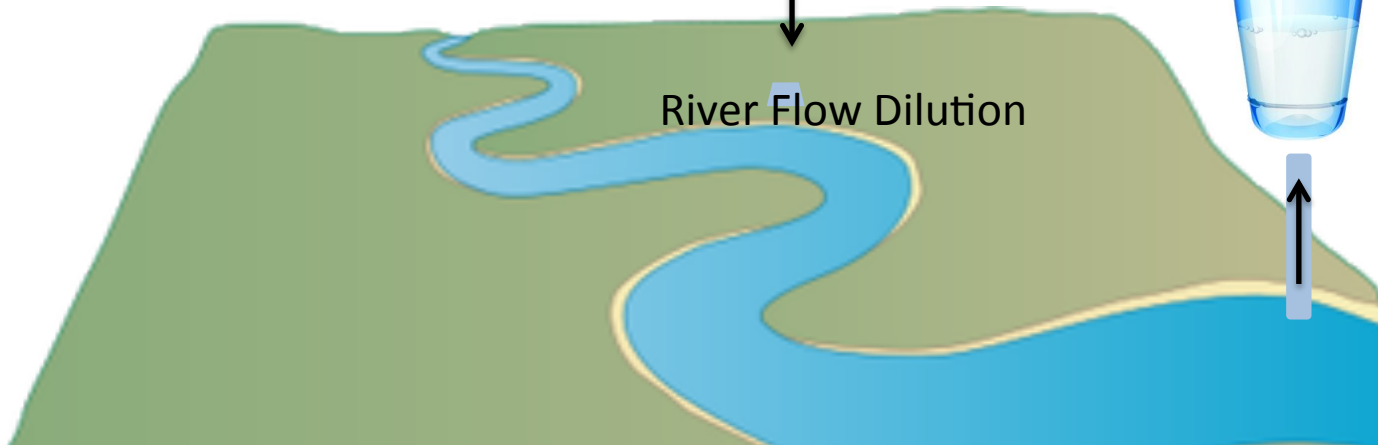
Urinary Excretion



**Drinking water  
human exposure!**



River Flow Dilution



Booker et al. Prioritizing anticancer drugs for environmental screening and risk assessment. *Science of the Total Environment* (2014) Accepted



# Shared Planet

ON NOW: Thinking Allowed  
LISTEN a in a Spanish Village; Teeth Loss

Home Episodes Clips Galleries Presenter - Monty Don Contact



> Next on  
Next Monday  
21:00  
BBC Radio 4

More episodes

[c.halsall@lancaster.ac.uk](mailto:c.halsall@lancaster.ac.uk)