

## WE'RE ONE YEAR OLD!



One year in...

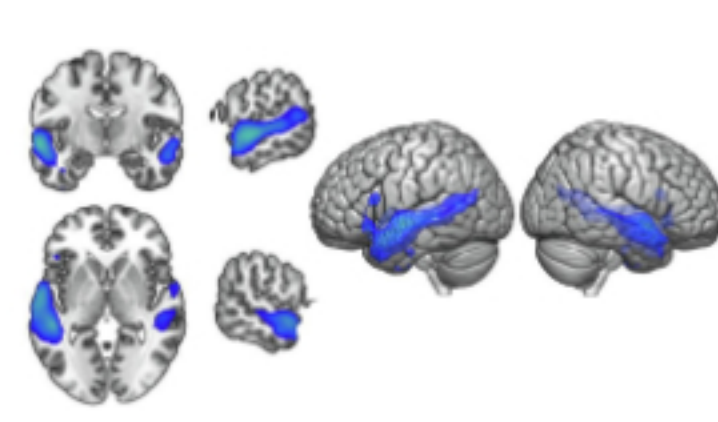
The PELICAN Lab was started in April 2022 by head pelican, Dr Hannah Stewart. So far she has been joined by two undergraduate Psychology students, Faye and Megan, as part of the Psychology Employability Programme. And recently by Ashlynn and Mia who are completing their MSc in Developmental Disorders.

### Successes in our first year



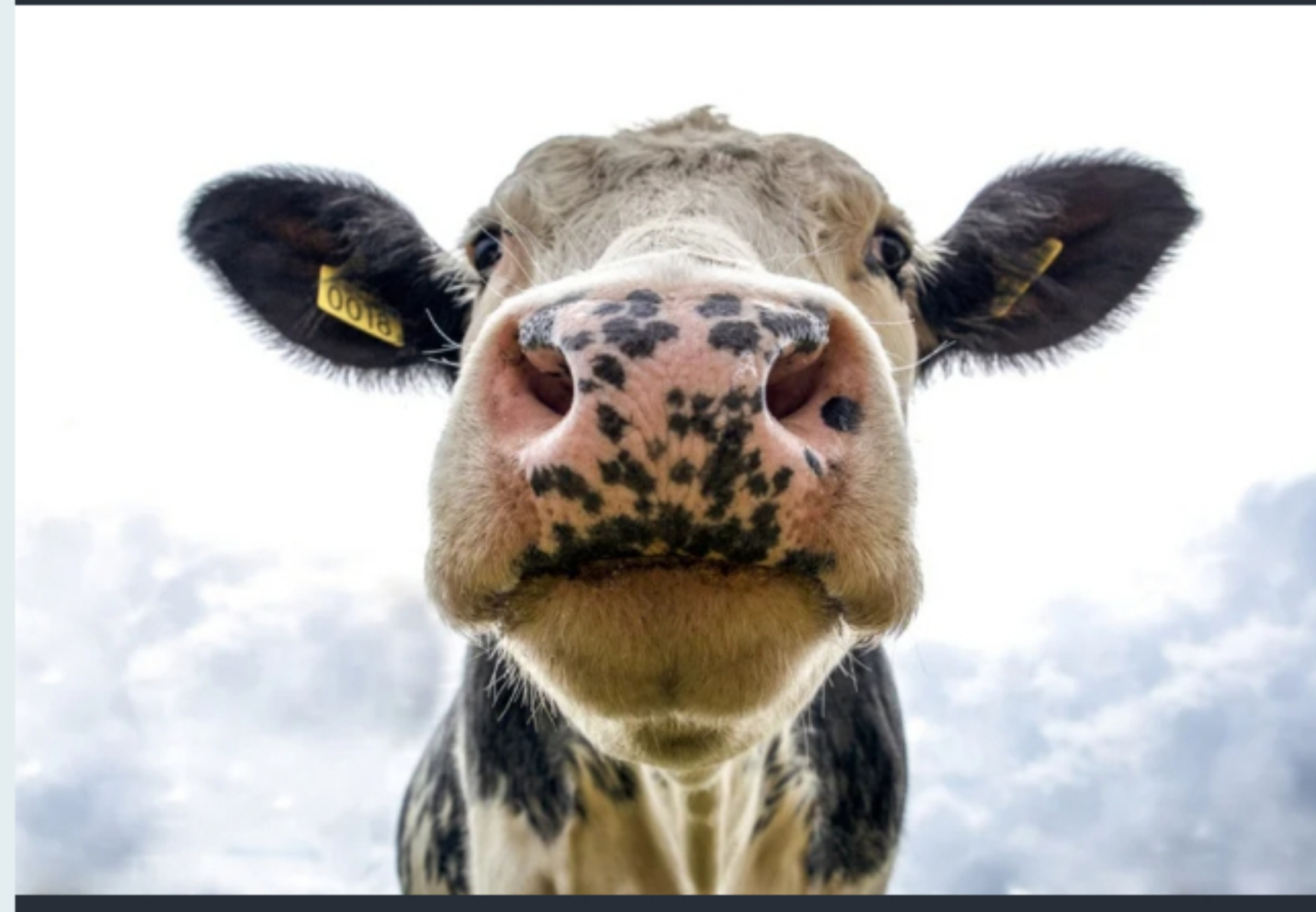
#### Funding

- Hannah won **£300,000** from the **EPSRC**, along with co-investigator Dr Benjamin Robinson at Lancaster University's Physics Department. The funds have repaired and upgraded our BioSemi EEG equipment. We will now be able to use a 64 channel system with infants through to adults.
- The lab has won a **£9,000 Joy Welch Grant** to continue our work using virtual reality to test children's listening ability.
- Hannah has also won **£10,000** from **Lancaster University** to run workshops this summer to discuss research priorities for children with mild-to-moderate hearing loss across the UK.



#### Publications

- **Auditory Processing Disorder:** MRI shows that children with everyday listening difficulties, but normal hearing, have differences in their speech processing networks compared to typically developing children. [You can read the article here.](#)
- **Mild-to-moderate hearing loss:** This registered double blind clinical trial compared two hearing aid algorithms in primary school aged children. After 13 months of use we found no differences in auditory, cognitive, academic or caregiver report outcomes between the two algorithms. [You can read the article here.](#)



We completed our data collection for the Multisite Overview of Oscillations - MOO - project. This project aims to extend our understanding about rhythm in the brain. It is being run at multiple sites across the world to establish the reliability and replicability of the examined effect.

[You can read more about it here.](#)

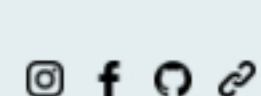
### UPCOMING STUDIES

- Assessing how children learn language in noisy environments
- Using VR to assess everyday listening in children with and without hearing impairments
- Exploring numerical and linguistic listening with EEG

If you have children aged 6-12 who are interested in taking part, please [register your interest here.](#)

- This summer we will be running workshops for children with mild-to-moderate hearing loss, their caregivers, clinicians and teachers of the deaf. If you are interested in taking part, [please email us.](#)

We are proud to be an open science lab



The PELICAN Lab

Department of Psychology, Lancaster University  
United Kingdom

You received this email because you signed up on our website.

[Unsubscribe](#)

