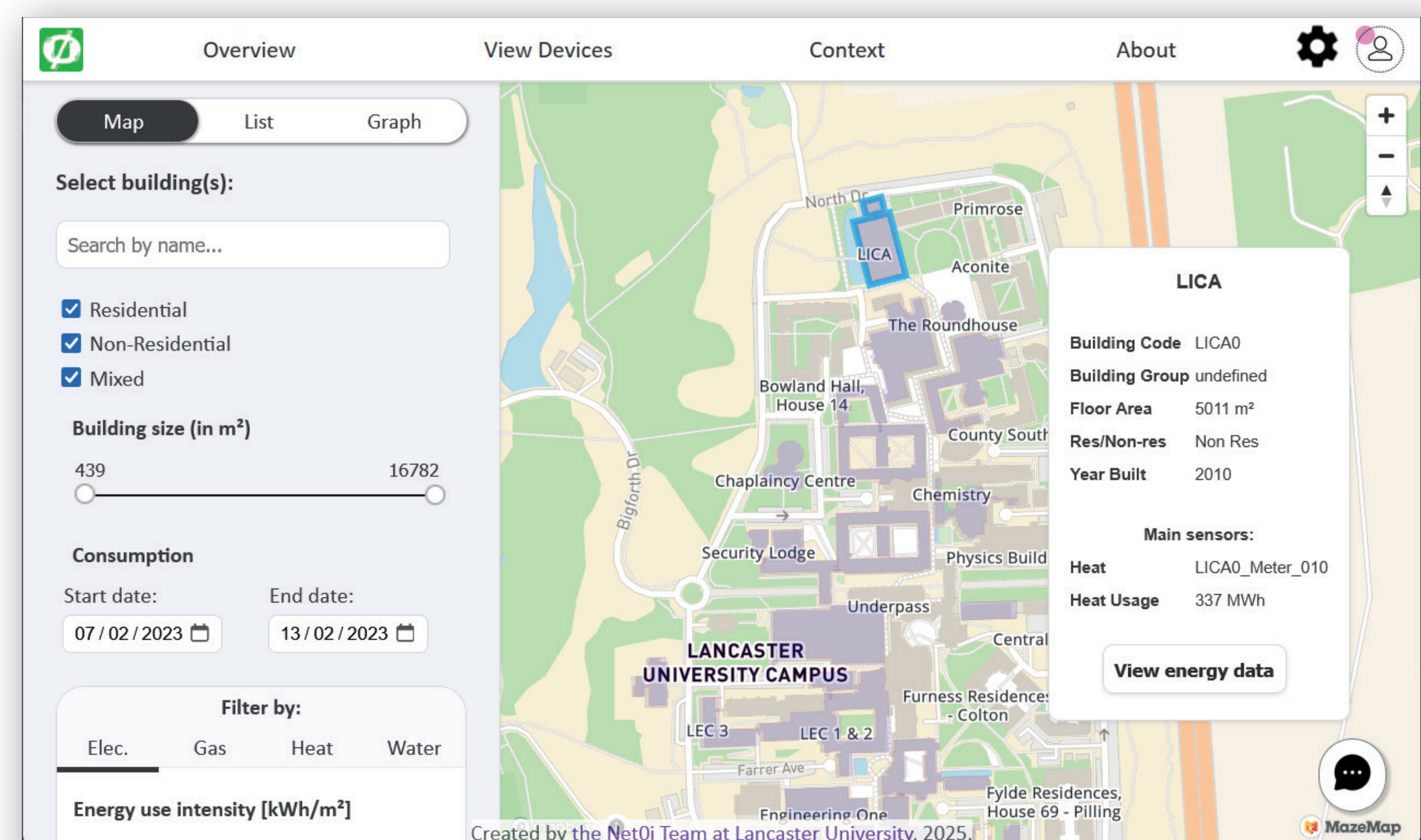


ContextViz: Making Context and Systems Knowledge Visible in Non-Domestic Energy Demand Dashboards

Christian Remy, Oliver Bates, Adrian Friday
Lancaster University, Lancaster, UK

ContextViz explores how energy data visualisation tools can be combined to allow for rich annotation, capturing tacit knowledge, explanations for anomalies, or user feedback. While statistical analysis provides insights into *what* is happening with energy systems, additional qualitative data explains the *why* of those occurrences. We call this type of information context.



Overview Health Check Anomaly Detection Energy Usage Context About

10 entries per page Copy CSV Excel PDF Print

Search:

Meter ID	Type	Class	Data (perc)	Zeroes (perc)	Mean	Outliers	Comments
MC032_L09_M13_R2064	Water	Cumulative	76.92%	0.0%	1	1	
MC032_L09_M2	Electricity	Rate	84.62%	0.0%	4	0	
MC032_L09_M21_R52	Electricity	Cumulative	76.92%	0.0%	11	0	
MC032_L09_M3	Electricity	Rate	76.92%	30.77%	0	6	
MC032_L09_M4	Electricity	Rate	76.92%	0.0%	2	0	
MC032_L09_M5	Electricity	Rate	84.62%	7.69%	1	0	
MC032_L09_M6	Electricity	Rate	76.92%	0.0%	13	0	
MC032_L09_M7	Electricity	Rate	76.92%	30.77%	0	6	
MC032_L09_M8	Electricity	Rate	76.92%	76.92%	0	0	
MC032_L09_M9_R2048	Gas	Cumulative	84.62%	0.0%	0	0	

Showing 211 to 220 of 1,737 entries

Created by the Net0i Team at Lancaster University, 2024.

Quick statistical summaries of data in the form of counting zeroes, outliers, or even just available data for a given time period provided invaluable information for the Lancaster University campus facility management team. Our health check directly led to more sustainable practices.

The key element of ContextViz is the ability to enter comments – context – for any data point or visualisation in the dashboard. Simply clicking on the speech bubble will open a dialog to capture information. This allows for seamless knowledge exchange, on-the-fly tagging of data errors, and immediate user feedback. Have a look at our demo at ICT4S or try online at: <http://christianremy.com/dashboard>

