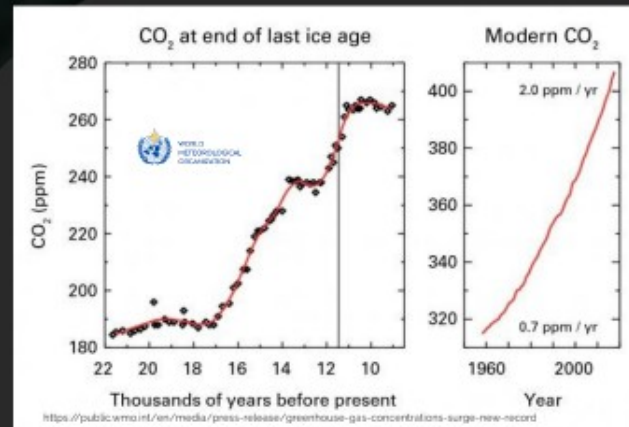




LEARN
—



DO WE?



The rate of increase of atmospheric carbon dioxide (CO₂) over the past 70 years is nearly 100 times larger than that at the end of the last ice age.

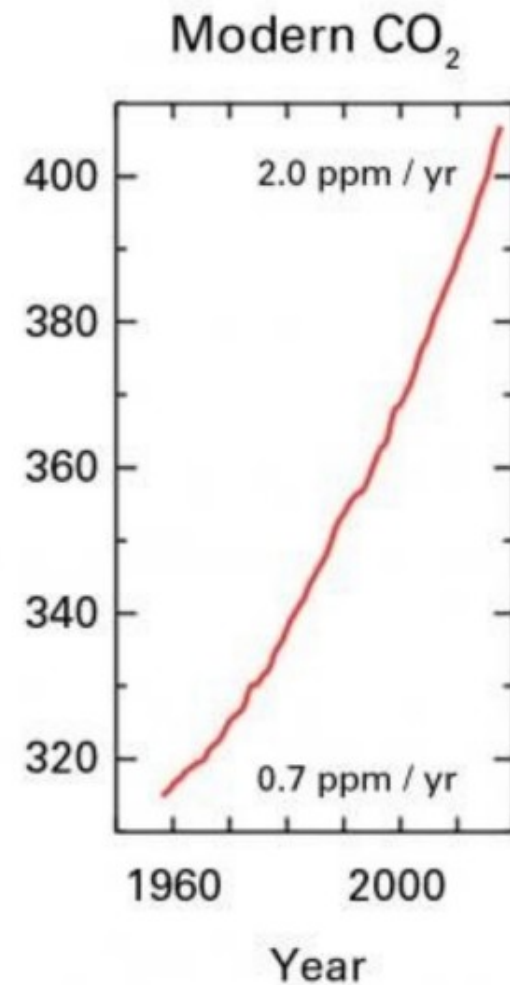
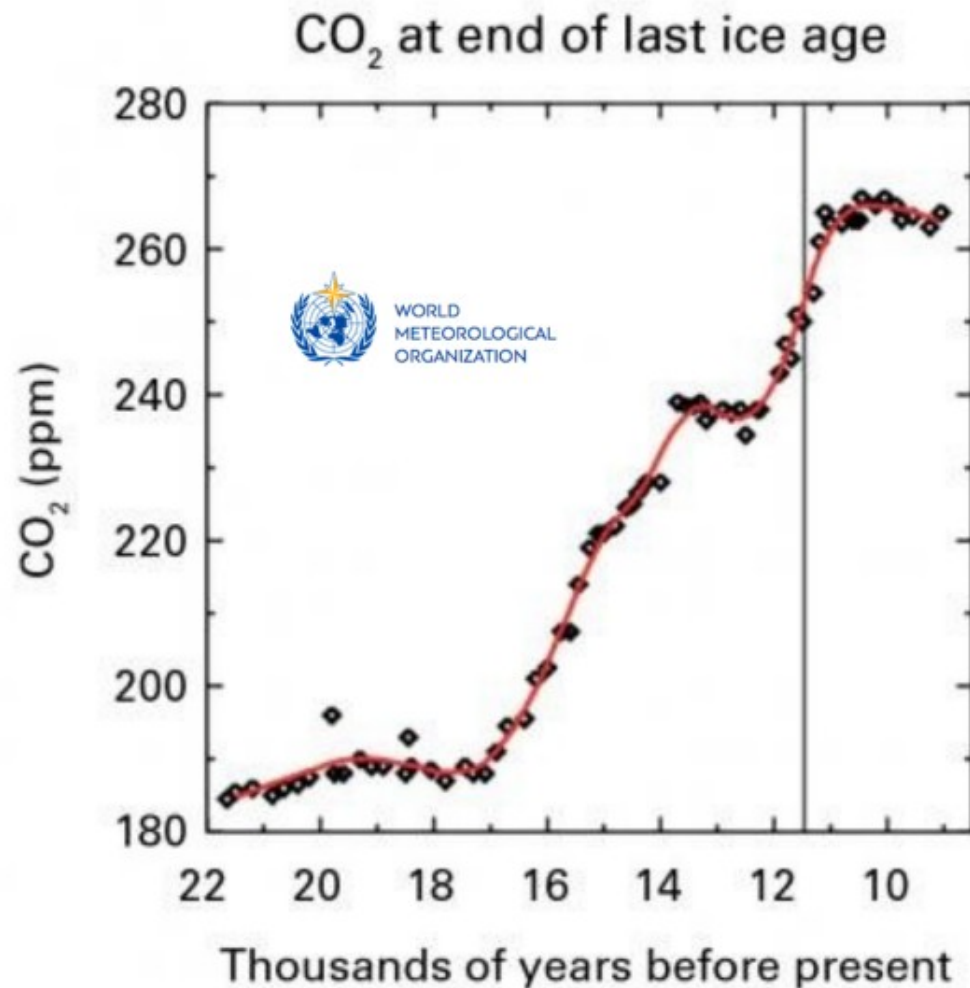
MOBILITIES
RESEARCH
people
objects
information
ideas
resources



corporeal,
physical
imaginative
virtual
communicative

UNDERSTANDING
BLOCKED

MERCHANTS
OF DOUBT



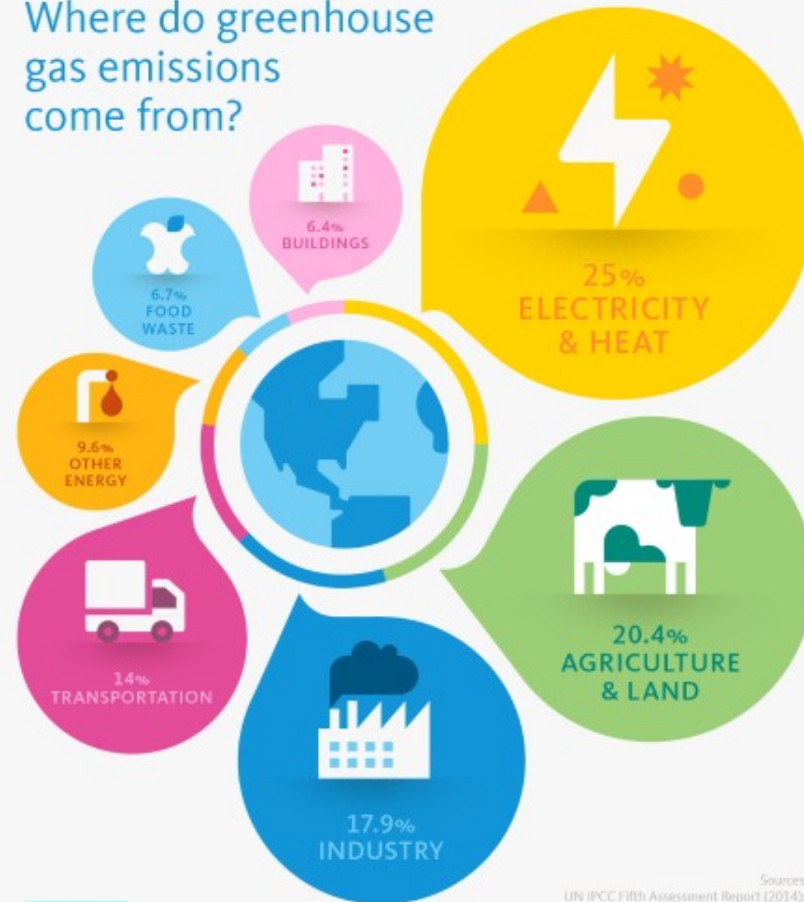
The rate of increase of atmospheric carbon dioxide (CO₂) over the past 70 years is nearly 100 times larger than that at the end of the last ice age.

<https://public.wmo.int/en/media/press-release/greenhouse-gas-concentrations-surge-new-record>

MOBILITIES RESEARCH

people
objects
information
ideas
resources

Where do greenhouse
gas emissions
come from?



UNIVERSITY
OF
CALIFORNIA

Learn more at
climate.universityofcalifornia.edu

Sources:
UN IPCC Fifth Assessment Report (2014);
UN FAO Food Waste Footprint (2013).
Percent of global greenhouse gas emissions

corporeal
physical
imaginative
virtual
communicative

UNDERSTANDING BLOCKED



BY 'BALANCE'



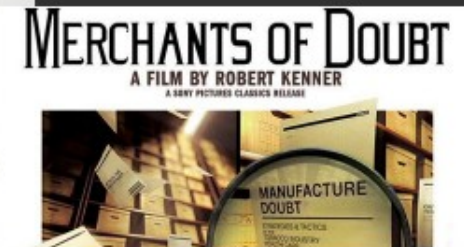
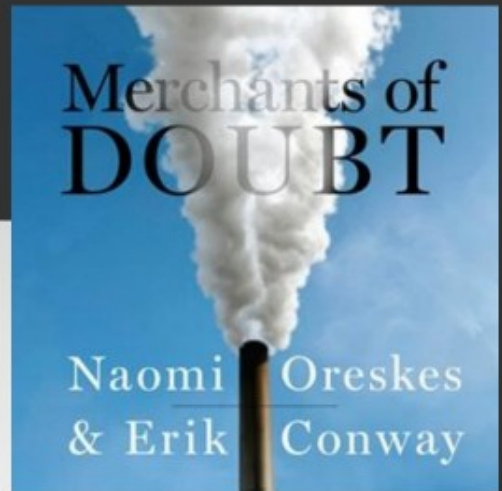
MERCHANTS OF DOUBT

effort would be given to a crusade against cigarettes.

Doubt is our product since it is the best means of competing with the "body of fact" that exists in the mind of the general public.

Doubt is our product

If we are successful in establishing a controversy at the public level, then there is an opportunity to put across the real facts about smoking and health. Doubt is also the limit of our "product."





ACT



ACT

CBCnews | Opinion

Home Opinion World Canada Politics Business Health Entertainment Technology & Science Video

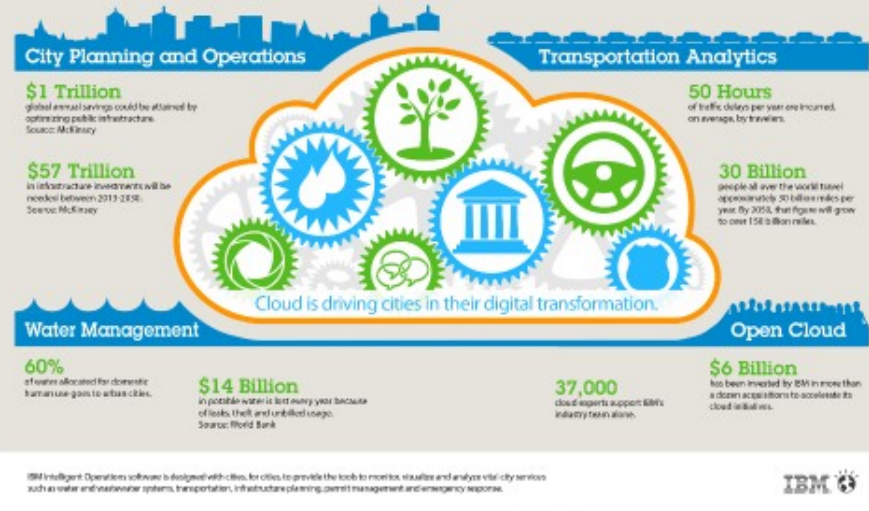
OPINION | Cambridge Analytica has blurred the line between persuasion and manipulation

The company identified the psychographics of individuals to create deliberately provocative messages.

By Alicia Warrless, for CBC News | Posted: Mar 23, 2018 4:00 AM ET | Last Updated: Mar 23, 2018 4:00 AM ET



Smarter Cities: Turning Big Data Into Insight





Banking model
of education
PAULO FREIRE





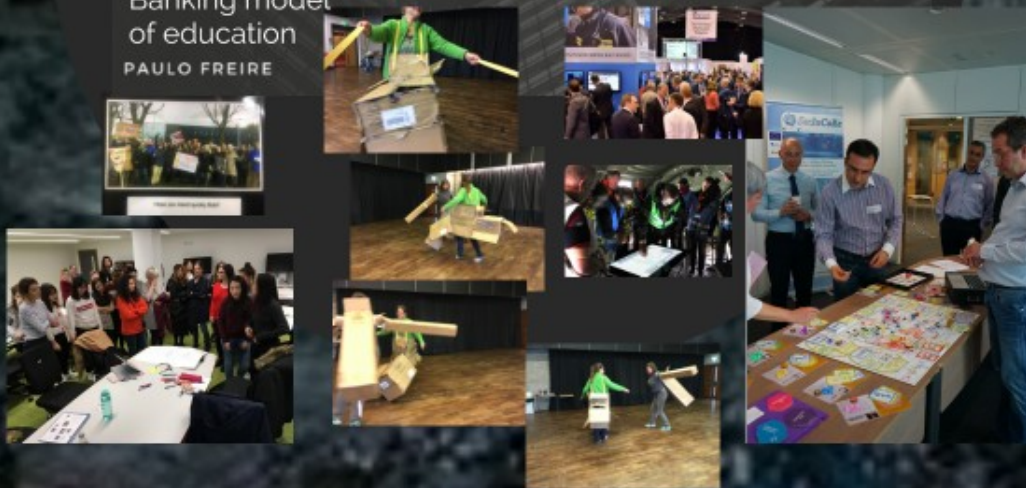


CHANGE



**EDUCATION ... IS THE PRACTICE OF
FREEDOM, THE MEANS BY WHICH MEN
AND WOMEN DEAL CRITICALLY AND
CREATIVELY WITH REALITY AND
DISCOVER HOW TO PARTICIPATE IN THE
TRANSFORMATION OF THEIR WORLD.**

Banking model
of education
PAULO FREIRE

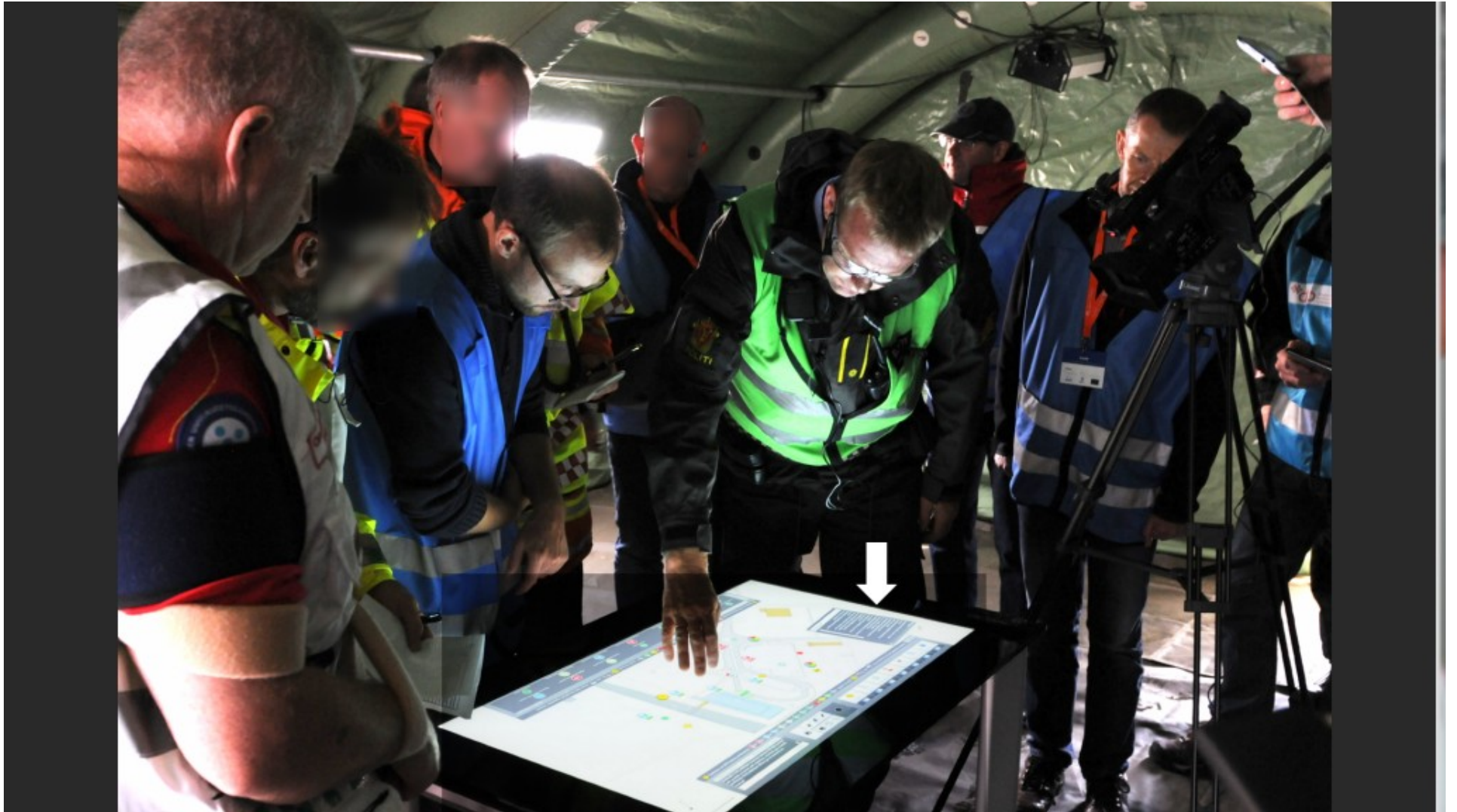


















CONTESTING CRITIQUE E-MOTIONAL AFFIRMATIVE DE-COLONIZING

Move with
Follow
Be moved by
Understand the moves
Make a move
Mobilise

EQUAL

Through investigations of movement, blocked movement, potential movement and immobility, dwelling and place-making, social scientists are showing how various kinds of 'moves' make social and material realities. Attention to the fluid, fleeting, yet powerful performativity of various everyday (im)mobilities transforms conceptions of social science inquiry, explanation and critique. We take it that there is no research and no social science without theory, but at the same time we argue that the mobilities turn folds analysis into the empirical in ways that open up different ways of understanding the relationship between theory, observation and engagement. It engenders new kinds of researchable entities, a new or rediscovered realm of the empirical and new avenues for critique.

COLLECTIVE

TROUBLED
TROUBLING
IN THE TROUBLE

moves

Through investigations of movement, blocked movement, potential movement and immobility, dwelling and place-making, social scientists are showing how various kinds of 'moves' make social and material realities. Attention to the fluid, fleeting, yet powerful performativity of various everyday (im)mobilities transforms conceptions of social science inquiry, explanation and critique. We take it that there is no research and no social science without theory, but at the same time we argue that the mobilities turn folds analysis into the empirical in ways that open up different ways of understanding the relationship between theory, observation and engagement. It engenders new kinds of researchable entities, a new or rediscovered realm of the empirical and new avenues for critique.

CONTESTING CRITIQUE E-MOTIONAL AFFIRMATIVE DE-COLONIZING

Move with
Follow
Be moved by
Understand the moves
Make a move
Mobilise

EQUAL

Through investigations of movement, blocked movement, potential movement and immobility, dwelling and place-making, social scientists are showing how various kinds of 'moves' make social and material realities. Attention to the fluid, fleeting, yet powerful performativity of various everyday (im)mobilities transforms conceptions of social science inquiry, explanation and critique. We take it that there is no research and no social science without theory, but at the same time we argue that the mobilities turn folds analysis into the empirical in ways that open up different ways of understanding the relationship between theory, observation and engagement. It engenders new kinds of researchable entities, a new or rediscovered realm of the empirical and new avenues for critique.

COLLECTIVE

TROUBLED
TROUBLING
IN THE TROUBLE





STAND WITH FRONTLINE COMMUNITIES IN OUR FIGHT FOR ENVIRONMENTAL JUSTICE, AGAINST THE RAVAGES OF TOXIC CHEMICALS AND CLIMATE CHANGE.

TRANSITION?
(IM)
POSSIBLE?



... the government was slow to act against domestic smoke – identified by the investigation as the leading source of urban air pollution in the early 1920s – because politicians were unwilling to impose unpopular restrictions on individual freedom.

Mosley 2009:295

© Getty Images




HUMAN RIGHTS, VALUES

HUMAN
FLOURISHING
HUMAN
SECURITY

MORE-THAN HUMAN PLANET

Collaborative
Experimental
Embodied
Egalitarian
Transformative
For 'Good'
Infrastructuring for contestation



... the government was slow to act against domestic smoke – identified by the Investigation as the leading source of urban air pollution in the early 1920s – because politicians were unwilling to impose unpopular restrictions on individual freedom.

Mosley 2009:295

© Getty Images





STAND WITH FRONTLINE COMMUNITIES IN OUR FIGHT FOR ENVIRONMENTAL JUSTICE, AGAINST THE RAVAGES OF TOXIC CHEMICALS AND CLIMATE CHANGE.

TRANSITION?
(IM)
POSSIBLE?



... the government was slow to act against domestic smoke – identified by the investigation as the leading source of urban air pollution in the early 1920s – because politicians were unwilling to impose unpopular restrictions on individual freedom.

Mosley 2009:295

© Getty Images



HUMAN RIGHTS, VALUES

HUMAN
FLOURISHING
HUMAN
SECURITY

MORE-THAN HUMAN PLANET

Collaborative
Experimental
Embodied
Egalitarian
Transformative
For 'Good'
Infrastructuring for contestation



STAND WITH FRONTLINE COMMUNITIES IN OUR FIGHT FOR ENVIRONMENTAL JUSTICE, AGAINST THE RAVAGES OF TOXIC CHEMICALS AND CLIMATE CHANGE.

TRANSITION?
(IM)
POSSIBLE?



... the government was slow to act against domestic smoke – identified by the investigation as the leading source of urban air pollution in the early 1920s – because politicians were unwilling to impose unpopular restrictions on individual freedom.
Mosley 2009:295

Distribution of the Sensible (Ranciere)

© Getty Images



HUMAN RIGHTS, VALUES

HUMAN
FLOURISHING
HUMAN
SECURITY

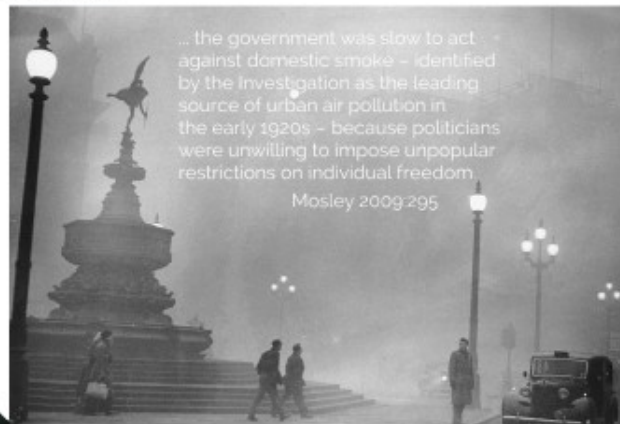
MORE-THAN HUMAN PLANET

Collaborative
Experimental
Embodied
Egalitarian
Transformative
For 'Good'
Infrastructuring for contestation



STAND WITH FRONTLINE COMMUNITIES IN OUR FIGHT FOR ENVIRONMENTAL JUSTICE, AGAINST THE RAVAGES OF TOXIC CHEMICALS AND CLIMATE CHANGE.

TRANSITION?
(IM)
POSSIBLE?



... the government was slow to act against domestic smoke - identified by the investigation as the leading source of urban air pollution in the early 1920s - because politicians were unwilling to impose unpopular restrictions on individual freedom.
Mosley 2009:295

Distribution of the Sensible (Ranciere)
Radically reflexive practice



HUMAN RIGHTS, VALUES

HUMAN
FLOURISHING
HUMAN
SECURITY

MORE-THAN HUMAN PLANET

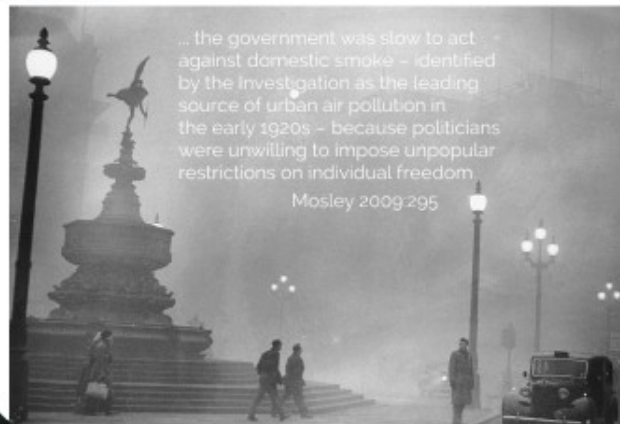
Collaborative
Experimental
Embodied
Egalitarian
Transformative
For 'Good'
Infrastructuring for contestation



STAND WITH FRONTLINE COMMUNITIES IN OUR FIGHT FOR ENVIRONMENTAL JUSTICE, AGAINST THE RAVAGES OF TOXIC CHEMICALS AND CLIMATE CHANGE.

TRANSITION? (IM) POSSIBLE?

How can
students be
more useful?
When?



... the government was slow to act against domestic smoke – identified by the investigation as the leading source of urban air pollution in the early 1920s – because politicians were unwilling to impose unpopular restrictions on individual freedom.

Mosley 2009:295

Distribution of the Sensible (Ranciere)
Radically reflexive practice



HUMAN RIGHTS, VALUES

HUMAN
FLOURISHING
HUMAN
SECURITY

MORE-THAN HUMAN PLANET

Collaborative
Experimental
Embodied
Egalitarian
Transformative
For 'Good'
Infrastructuring for contestation

