

# New developments in the CAPTAIN Toolbox for Matlab with case study examples<sup>\*</sup>

C. J. Taylor<sup>\*</sup> P. C. Young<sup>\*\*</sup> W. Tych<sup>\*\*\*</sup> E. D. Wilson<sup>\*</sup>

<sup>\*</sup> *Engineering Department, Lancaster University, UK  
(e-mail: c.taylor@lancaster.ac.uk, e.d.wilson1@lancaster.ac.uk)*

<sup>\*\*</sup> *Lancaster Environment Centre, Lancaster University, UK; Fenner  
School of Environment and Society, Australian National University,  
Canberra; Australia (e-mail: p.young@lancaster.ac.uk)*

<sup>\*\*\*</sup> *Lancaster Environment Centre, Lancaster University, UK  
(e-mail: w.tych@lancaster.ac.uk)*

---

**Abstract:** The CAPTAIN Toolbox is a collection of Matlab algorithmic routines for time series analysis, forecasting and control. It is intended for system identification, signal extraction, interpolation, forecasting and control of a wide range of linear and non-linear stochastic systems across science, engineering and the social sciences. This article briefly reviews the main features of the Toolbox, outlines some recent developments and presents a number of examples that demonstrate the performance of these new routines. The examples range from consideration of global climate data, through to electro-mechanical systems and broiler chicken growth rates. The new version of the Toolbox consists of the following three modules that can be installed independently or together: off-line, time-varying parameter estimation routines for *Unobserved Component* (UC) modelling and forecasting; *Refined Instrumental Variable* (RIV) algorithms for the identification and estimation of both discrete and ‘hybrid’ continuous-time transfer function models; and various routines for *Non-Minimal State Space* (NMSS) feedback control system design. This new segmented approach is designed to provide new users with a gentler introduction to Toolbox functionality; one that focuses on their preferred application area. It will also facilitate more straightforward incorporation of novel algorithms in the future.

*Keywords:* Identification; estimation; forecasting; signal processing; control system design; robotic systems; climate data; chicken growth

---

## 1. INTRODUCTION

The *Computer-Aided Program for Time Series Analysis and Identification of Noisy Systems* (CAPTAIN) Toolbox provides access to novel algorithms for various important aspects of system identification, estimation, nonstationary time series analysis, signal processing, adaptive forecasting and automatic control system design. These algorithms have been developed by the first three authors of this article, and their colleagues (see Acknowledgements), over many years. In fact, CAPTAIN was originated by the second author over 40 years ago, whilst the first Matlab implementation was released in 2000 (Pedregal et al., 2007; Taylor et al., 2007). The books on *Recursive Estimation and Time Series Analysis* (Young, 2011) and *True Digital Control: Statistical Modelling and Non-Minimal State Space Design* (Taylor et al., 2013) contain information on the history, derivation and use of all of the algorithms in the Toolbox.

In essence, the Toolbox represents the output of various on-going investigations into Matlab implementations of the underlying algorithms, as well as default and optional values of the input parameters to the routines. This should help both expert and less experienced modellers to use these routines when they are considering the analysis of data sets across a wide range of scientific disciplines, as illustrated by the citations to e.g. Taylor et al. (2007) that have appeared in diverse areas of the open literature.

As explained later in the article, the latest version of the Toolbox includes improved routines and new modelling tools. Furthermore, the Toolbox has recently been reorganised significantly and now consists of the following three distinct modules:

- (1) **TVPMOD: Time Variable Parameter (TVP) MODELS.** For the identification of Unobserved Component (UC) models, with a particular focus on time-variable and state-dependent parameter models, including the popular *Dynamic Harmonic Regression* (DHR), all of which can be used for signal extraction, interpolation and forecasting.

---

<sup>\*</sup> This work is supported by the Engineering and Physical Sciences Research Council (EPSRC), EP/M015637/1 and EP/R02572X/1; and project Programa Estatal de Investigacion 2013-2016, Spain (ECO2015-70331-C2-1-R).

- (2) **RIVSID: Refined Instrumental Variable (RIV) System Identification** algorithms. For optimal RIV identification of multiple-input, continuous and discrete-time, *Transfer Function* (TF) models.
- (3) **TDCONT: True Digital CONTROL (TDC)**. For multivariable control, including pole assignment and optimal LQ/LQG (Linear-Quadratic-Gaussian) design, and with both backward shift ( $z^{-1}$ ) and delta-operator ( $\delta$ ) options.

A web site <http://captaintoolbox.co.uk> is devoted to the Toolbox: it reports recent developments, as well as providing short discussions on technical issues arising. The Toolbox is free to non-commercial users and can be downloaded from: <http://www.lancaster.ac.uk/staff/taylorcj/tdc>.

The present article reviews the main features of the Toolbox (section 2); outlines some recent improvements and a number of other developments that will be added in the future (section 3); and presents a number of examples that demonstrate its practical application (section 4). These examples include the analysis of global climate models and paleo-climatic data, a nonlinear electro-mechanical system, and broiler chicken growth curves. The article refers to a rather large number of acronyms, the most important of which are summarised in Table 1.

## 2. CAPTAIN TOOLBOX OVERVIEW

The CAPTAIN Toolbox has evolved to service the requirements of the *Data-Based Mechanistic* (DBM) modelling philosophy (see e.g. Young, 1978, 2011; Price et al., 1999). DBM models are obtained initially from the analysis of observational time-series but are only considered credible if they can be interpreted in physically meaningful terms. It is a philosophy that emphasises the importance of parametrically efficient, low order, dominant mode models, as well as the development of stochastic methods and the associated statistical analysis required for the identification and estimation of such models. It stresses the importance of explicitly acknowledging the basic uncertainty that is essential to the characterisation of any physical, chemical, biological or socio-economic process.

### 2.1 Toolbox Structure

The **TVPMOD** module is based around a state-space framework that allows for the identification of UC models. Here, the time series is assumed to be composed of an additive or multiplicative combination of different components that have defined statistical characteristics but which cannot be observed directly. The stochastic evolution of each parameter is assumed to be described by a generalised random walk process. The TVP estimates are obtained first from a forward pass Kalman filtering step that also allows for forecasting from the end of the time series. However, because the estimates on this forward pass are lagged, as a result of the filtering operations, optional updating, using a backwards-recursive, *Fixed Interval Smoothing* algorithm yields lag-free estimates and allows for signal extraction, interpolation over gaps in the time series and backcasting.

In this manner, **TVPMOD** provides routines for the optimal estimation of dynamic (i.e. TVP) regression mod-

Table 1. Abbreviations.

TVPMOD	Time Variable Parameter module
RIVSID	System Identification module
TDCONT	True Digital Control module
ARX	Auto-Regression with eXogenous variables
CT	Continuous-Time
DBM	Data-Based Mechanistic
DHR	Dynamic Harmonic Regression
DT	Discrete-Time
MPC	Model Predictive Control
NMSS	Non-Minimal State Space
PIP	Proportional-Integral-Plus
RIV	Refined Instrumental Variable
RIVBJ	RIV for full Box-Jenkins models
SDP	State Dependent Parameter
TDC	True Digital Control
TF	Transfer Function
TVP	Time Variable Parameter
UC	Unobserved Components

els, including linear regression; auto-regression, which is useful for spectrogram estimation (Young, 2006); and DHR (Young et al., 1999), which provides a very powerful forecasting algorithm (see the examples in section 4.1 and 4.4). Finally, a closely related algorithm for *State Dependent Parameter* (SDP) estimation provides a non-parametric identification procedure for a wide class of nonlinear and chaotic systems (see section 4.2).

The **RIVSID** module includes routines for the optimal identification and estimation of a unified Box-Jenkins model that includes both discrete and continuous-time TF models (Young, 2011, 2015; Taylor et al., 2013). One advantage of such TF models is their simplicity and ability to characterise the dominant modal behaviour of a stochastic, dynamic system. This makes such a model an ideal basis for control system design, model reduction and large simulation model emulation (Taylor and Shaban, 2006; Young and Ratto, 2011).

Finally, with the new **TDCONT** module (see section 3.2), the latest version of the Toolbox now has a full set of algorithms for control system design, simulation and robustness evaluation (Taylor et al., 2013).

### 2.2 How to use the Toolbox

The Toolbox is primarily used by means of standard function calls i.e. directly from the Matlab Command Window or from scripts. Each function is called using a number of input and output arguments. Here, default input arguments are embedded into CAPTAIN and usually provide a reasonable initial result, while the full power of the Toolbox is accessed through the wide range of optional settings. For example, a smoothed trend  $ys$  for the climate data illustrated in Fig. 1 (see later) is straightforwardly obtained using  $ys = irwsm(y)$ , in which  $irwsm$  is a CAPTAIN function for the estimation of integrated random walk models. There is only one input argument, the data  $y$ , and so CAPTAIN utilises the most typical model for this type of analysis. However, entering  $ys = irwsm(y, TVP, nvr)$  allows the user to optionally specify the model type and noise variance ratio, among other settings. Rather than provide a formal tutorial in this article, we instead direct the reader to the ‘Getting Started Guide’ which is freely available from the first authors’ website.

Finally, the Toolbox includes over 50 useful command line demos. These illustrate the wide scope of models and algorithms. Experience suggests that one of the most effective ways to get started with CAPTAIN is to examine such demos and then to adapt them for each new data set of interest, so saving much time in algorithmic development.

### 3. RECENT DEVELOPMENTS

Earlier articles about the Toolbox, presented in software-themed sessions at the *IFAC System Identification* series of conferences, have included Young et al. (2009) and Young and Taylor (2012). The first of these provides an overview of its functionality, with practical examples based on the Mauna Loa atmospheric carbon dioxide series and flow data for the River Canning in Western Australia. The second reported on new functions for the estimation of multiple-input TF models with different denominator polynomials and on some improvements for real-time recursive estimation, with a practical example concerning the Leaf River catchment in Mississippi, USA. The following discussion focuses on the main developments subsequent to these and describes some new examples. The Toolbox has also been updated in various other minor ways during the past few years, not least to fix bugs and to ensure compatibility with the latest versions of Matlab.

#### 3.1 New Modular Structure

In recent years, the Toolbox has grown to over 300 routines, sometimes leading to confusion, especially for new users who might not know where to start. Hence, one recent development is the introduction of the three modules noted above. In addition to the superficial division of the Toolbox into three separate folders, the reorganisation is accompanied by revisions to the user help information, the development of new demos for each module, and the preparation of three new user handbooks (in-progress). In addition, some of the common sub-functions (not normally directly called by the user) have been rewritten to ensure that each module can operate independently of each other. These new arrangements are primarily designed to help the Toolbox developers to more rapidly correct bugs, and to upgrade with new algorithms in the future. However, further work is required to continue to improve the accessibility of the Toolbox, particularly for inexperienced users. Many functions in the Toolbox include an enormous number of options. These provide value to the authors and a small number of other users, but can seem overly complicated to occasional modellers, hence a streamlining of some of the options is now in progress.

#### 3.2 New TDCONT Module

In contrast to some other Matlab toolboxes that focus on either system identification *or* control, CAPTAIN facilitates an integrated TDC approach that encompasses the entire design process, from data-based model identification, through to control system design and implementation, using a digital, sampled-data standpoint throughout (Taylor et al., 2013). In brief, the design procedure consists of (i) stochastic identification and recursive estimation of suitable control models (using RIVSID) based

on the analysis of either planned or monitored experimental data; or via model reduction from data generated by a physically-based simulation model; (ii) off-line control algorithm design and initial evaluation (using TDCONT), via an iterative application of an appropriate discrete-time design methodology, coupled with closed-loop sensitivity analysis based on Monte-Carlo simulation; and (iii) implementation and evaluation for the real process.

With regard to (iii), standard real-time Matlab tools or other software environments can be utilised. Alternatively, since the approach yields *Proportional-Integral-Plus* (PIP) algorithms that can be interpreted as a logical extension of conventional PI/PID methods, it is usually straightforward to express the controller in a suitable incremental form, and hence implement using existing industry hardware-software frameworks. As a result, CAPTAIN Toolbox algorithms have been utilised for the design of PIP control systems in various practical domains, from agriculture (Lees et al., 1998; Taylor et al., 2000, 2004), robotics in construction (Shaban et al., 2008) and nuclear decommissioning (Taylor and Robertson, 2013) (see also section 4.2), as well as for simulation-based research into e.g. engines (Jamali et al., 2015).

Central to TDCONT is a generalised *Non-Minimal State Space* (NMSS) model that allows for deterministic and stochastic optimal control design, in addition to pole assignment and predictive control options. In contrast to earlier versions of the Toolbox, the new module includes delta-operator design (Chotai et al., 1998), robustness evaluation (Taylor et al., 2001) and analytical multivariable decoupling; and the authors are presently adding functions for nonlinear control based on SDP models. Furthermore, the included demos reproduce almost every worked example and graphical output from a complementary book on state-space control (Taylor et al., 2013). In other words, NMSS feedback is utilised in TDCONT as a unifying framework for generalised digital control system design, with the included demos providing a relatively gentle learning curve, from which potentially challenging topics, such as optimal, stochastic and multivariable control can all be investigated.

#### 3.3 Other Algorithmic Developments

The major up-coming changes to CAPTAIN are a new routine for *Multi-State Dependent Parameter* (MSDP) estimation; an *Arbitrary Sampling* DHR (ASDHR) algorithm that allows for non-uniformly sampled data; modifications to the RIVSID routines to allow for more refined initiation on the very few occasions when the standard procedures might fail, as well as automating the present advice about estimating initial conditions when using *rivcbj* (outlined in [http://captaintoolbox.co.uk/Captain\\_Toolbox.html/Technical\\_Matters/Technical\\_Matters.html](http://captaintoolbox.co.uk/Captain_Toolbox.html/Technical_Matters/Technical_Matters.html)); and, finally, making the input and output arguments of routines conform better with those of other well-known toolboxes, such as SID and CONTSID (Padilla et al., 2015).

The new SDP and DHR algorithms will be prepared for introduction into the Toolbox after full  $\beta$ -testing. In the first instance, the initiation modifications for RIVSID just involve an option for the user to insert the details of the model, with a recommendation on how to estimate

this using high order ARX modelling and emulation but additional changes in the future are intended to automate the procedure completely.

#### 4. ILLUSTRATIVE EXAMPLES

The first two examples exploit Continuous-Time (CT) models. CAPTAIN was the first Matlab Toolbox to allow for optimal identification of both Discrete-Time (DT) and CT models from sampled data in a unified ‘hybrid’ TF form (Young, 2011), based on algorithms developed originally by Young and Jakeman (1979–1980). The latest versions of the CT routines (*rivcbjid/rivcbj*) are used in the first example, where they are combined with DHR modelling (*dhr*) for an important forecasting application. The second example utilises *rivcbj* and *sdp* for a robotic system. Further examples demonstrate DT estimation (using *rivcbjid/rivcbj*) for a biological control problem and application of *dhr* to a noisy paleo-climatic data set.

##### 4.1 Global Climate Model Identification and Forecasting

This recent study (Young, 2018) follows from earlier work on climate modelling and carbon emissions management (Jarvis et al., 2009). It is based on a UC model and has involved *rivcbjid/rivcbj* modelling of the continuous-time TF relationship between total radiative forcing and the globally averaged surface temperature; together with *dhr* modelling of an additive, quasi-cyclic component. This component plays an important part in explaining the temperature changes and appears to be related to other quasi-cyclic climate phenomena, such as the *Atlantic Multidecadal Oscillation* (AMO). The complete model forms the basis for forecasting using the Kalman filter that is part of the DHR algorithm. A typical example is shown in Fig. 1, where we see that, on the basis of only the data up to 2001, it is able to forecast successfully the changes in the global temperature for 15 years ahead and produce forecasts after this which seem feasible. The CT model is important because it is related directly to the differential equation models used by climate scientists and is characterised by parameters that can be interpreted directly in climate terms. Also, the *rivcbj* routine yields low order CT models that are able to ‘emulate’ the response of large climate models almost perfectly.

##### 4.2 Nonlinear Electro-Mechanical System Identification

This example is also based on CT modelling, this time a differential equation model of a nonlinear *Electro-Mechanical Positioning System* (EMPS), where the *sdp* implementation of the SDP algorithm is used to identify frictional nonlinearity in the system. This routine exploits fixed interval smoothing, together with special re-ordering of the data to generate a non-parametric (graphical) estimate of the nonlinearity. First, the *sdp* routine provides the non-parametric estimate; then a suitable parametric function is selected that is able to characterise the shape of this estimate, with its parameters optimised using the standard *lsqnonlin* optimisation routine in Matlab. Both estimates are shown in Fig. 2 and it will be noted that the nonlinearity is identified as being asymmetrical. This is important in practical terms because it is normally

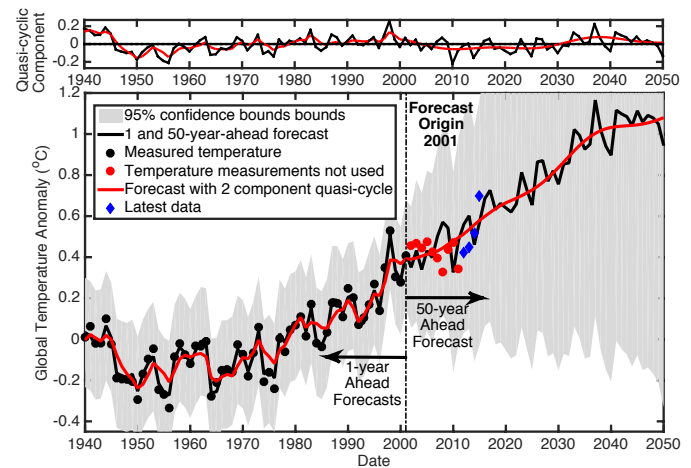


Fig. 1. Global climate model: 50 year ahead forecast of global surface temperature from 2001.

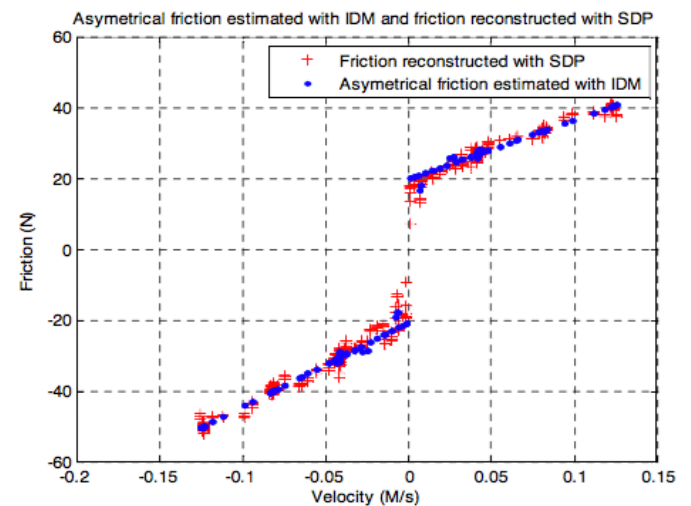


Fig. 2. Electro-Mechanical System Identification showing SDP and Inverse Dynamic Model (IDM) estimates.

assumed to be symmetric and is estimated as such. The paper describing this study (Janot et al., 2017) also considers nonlinear SDP control. This linearises the closed-loop system so that linear PIP control, exploiting the TDCONT routines and a *rivbj* identified model of the inner closed-loop, is used for outer loop ‘trimming’ that refines the closed-loop response. Related SDP modelling and control approaches have been developed by Taylor and Robertson (2013) for a robotic hydraulic manipulator system.

##### 4.3 Chicken Growth Curves

In this example, a DT *rivcbjid/rivcbj* model of the weight output of broiler chickens in response to feed input is estimated from simulated data. The model is used to design an MPC algorithm to control the growth response of the broiler chickens, using the feed supply, with the aim of following a predefined target weight trajectory. This simulated example is based on practical work carried out by researchers at KU Leuven (Aerts et al., 2003; Cangar et al., 2007). For the present article, simulated input data for model estimation are generated from a basic linear ad

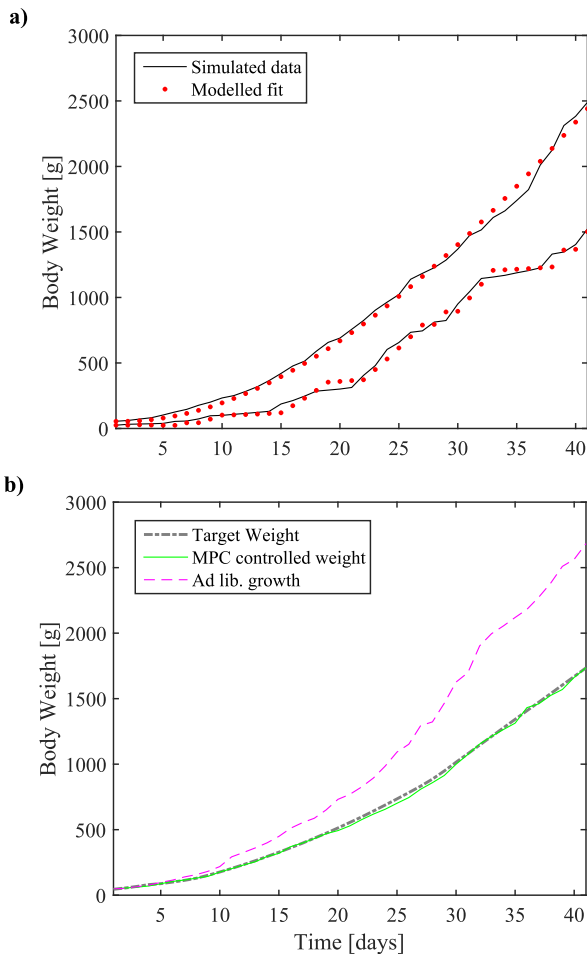


Fig. 3. Simulated broiler chicken growth curves showing: a) modelling weight response to feed inputs and b) closed-loop controlled weight response.

libitum feed rule and an experimental feed rule. For the latter, each day the feed has a 50% of being the same as the ad libitum feed, or a 50% chance of being 20% of the ad libitum feed. The corresponding output growth is simulated using a nonlinear growth formula based on equation (5) from Aerts et al. (2003). From twenty-four simulated data sets, in twelve the feed was based on the ad libitum feed rule, and in the other twelve the experimental feed rule. Random variations to the inputs and output were added to the data. The best DT model structure across all data sets is identified. An example of the fit to two data sets is given in Fig. 3a. The average identified model parameters are used to design a constrained MPC. The resulting growth curve when using MPC is compared to ad libitum and the desired growth in Fig. 3b.

#### 4.4 Detecting Long Term Cycles in Paleo-Climatic Data

The `dhr` routine has recently been used in the detection and quantification of a millennial scale cycle in precipitation changes, based on a high-resolution speleothem  $\delta^{18}\text{O}$  record from northern Iberia (Smith et al., 2016). These variations in precipitation delivery relate to an underlying millennial scale cycle in North Atlantic Oscillation (NAO) dynamics, which show two distinct cycle lengths of approximately 1300 and 1500 years (extracted

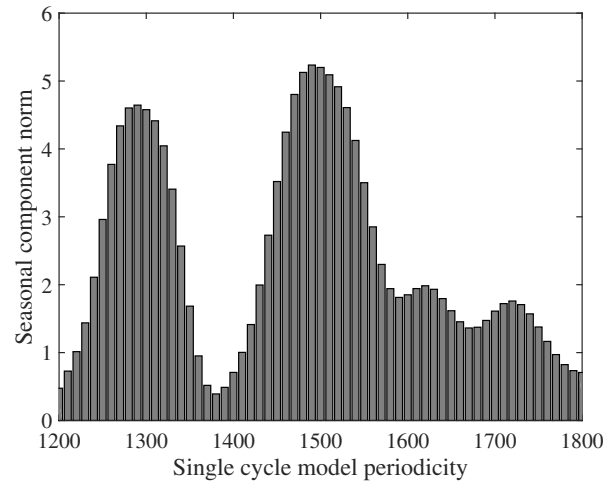


Fig. 4. Total power measure ( $L^2$ -norm of the modelled cyclic component) of single periodicity against the tested periodicity range (years) (Smith et al., 2016).

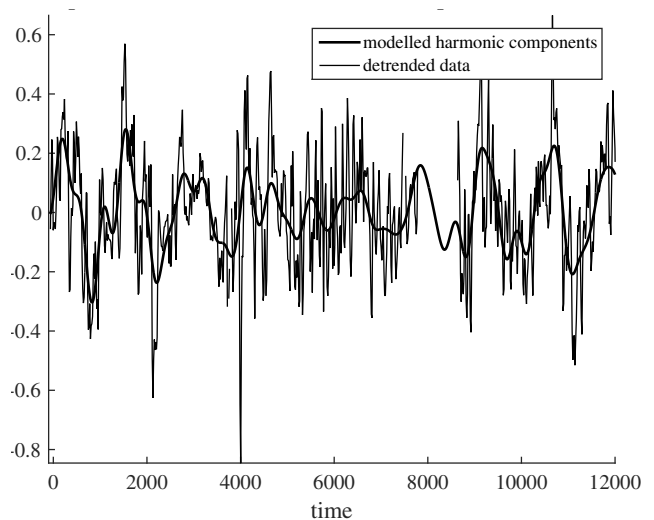


Fig. 5. Full two cycles and trend DHR model, shown for clarity without the trend, and the detrended data, plotted against time (years). Timescale is years before present. Gaps in the record are visible especially around 8 ka before present.

from data and visible as peaks in Fig. 4) with evolving amplitudes throughout the Holocene until the modern day. The speleothem  $\delta^{18}\text{O}$  is strongly correlated to existing records of North Atlantic Ocean Ice Rafted Debris (IRD), indicating an NAO-like connection with oceanic circulation during the Holocene. DHR methods are used in the identification of cycle periodicities, initially with a single periodicity model that highlights the two spectral peaks, Fig. 4, for which standard frequency response approaches struggle due to high noise levels. A dual frequency DHR model is subsequently applied and explains over 70% of the data variance. Level breaks in the time series trend are handled using a variance intervention technique also implemented in the `dhr` routine. The cyclic model fit to the detrended series is shown in Fig. 5.

## 5. CONCLUSIONS

The article has briefly reviewed the main features of the CAPTAIN Toolbox for Matlab, and described how it is now organised into modules for: (i) TVP estimation and UC modelling; (ii) RIV identification and estimation of both discrete and ‘hybrid’ continuous-time TF models; and (iii) NMSS control system design. The article has focused on some recent improvements and developments, and has alluded to new algorithms that are in the process of being added to the Toolbox. Other future work includes the inclusion of multivariable delta-operator system identification and control, and nonlinear SDP control.

## ACKNOWLEDGEMENTS

The current developers of the CAPTAIN toolbox are the first three authors of this article. Significant contributors in the past have included: Prof. Diego J. Pedregal, Escuela Técnica Superior de Ingenieros (Industriales Edificio Politécnica, Ciudad Real), Paul G. McKenna and Renata Romanowicz. The authors are also grateful to the many toolbox users who have made suggestions over the years.

## REFERENCES

- Aerts, J.M., Lippens, M., De Groote, G., Buyse, J., Decuyper, E., Vranken, E., and Berckmans, D. (2003). Recursive prediction of broiler growth response to feed intake by using a time-variant parameter estimation method. *Poultry Science*, 82, 40–49.
- Cangar, Ö., Aerts, J.M., Vranken, E., and Berckmans, D. (2007). Online growth control as an advance in broiler farm management. *Poultry Science*, 86, 439–43.
- Chotai, A., Young, P.C., McKenna, P., and Tych, W. (1998). PIP design for delta-operator systems. *International Journal of Control*, 70, 123–168.
- Jamali, P., Sadeghi, J., Tavakoli, S., and Khosravi, M.A. (2015). Weight optimal PIP control of a gasoline engine model. In *European Control Conference*. Linz, Austria.
- Janot, A., Young, P.C., and Gautier, M. (2017). Identification and control of electro-mechanical systems using state-dependent parameter estimation. *International Journal of Control*, 90, 643–660.
- Jarvis, A., Leedal, D., Taylor, C.J., and Young, P. (2009). Stabilizing global mean surface temperature: a feedback control perspective. *Environmental Modelling and Software*, 24, 665–674.
- Lees, M.J., Taylor, C.J., Young, P.C., and Chotai, A. (1998). Modelling and PIP control design for open top chambers. *Control Engineering Practice*, 6, 1209–1216.
- Padilla, A., Garnier, H., and Gilson, M. (2015). Version 7.0 of the CONTSID toolbox. In *17th IFAC Symposium on System Identification (SYSID)*. Beijing China.
- Pedregal, D.J., Taylor, C.J., and Young, P.C. (2007). *System Identification, Time Series Analysis and Forecasting. The Captain Toolbox Handbook*. Engineering Department, Lancaster University.
- Price, L., Young, P.C., Berckmans, D., Janssens, K., and Taylor, J. (1999). Data-based mechanistic modelling and control of mass and energy transfer in agricultural buildings. *Annual Reviews in Control*, 23, 71–83.
- Shaban, E.M., Ako, S., Taylor, C.J., and Seward, D.W. (2008). Development of an automated verticality alignment system for a vibro-lance. *Automation in Construction*, 17, 645–655.
- Smith, A.C., Wynn, P.M., Barker, P.A., Leng, M.J., Noble, S.R., and Tych, W. (2016). North Atlantic forcing of moisture delivery to Europe throughout the Holocene. *Nature Scientific Reports*, 14: 24745.
- Taylor, C.J., Chotai, A., and Young, P.C. (2001). Design and application of PIP controllers: Robust control of the IFAC93 benchmark. *InstMC: Transactions*, 3, 183–200.
- Taylor, C.J., Leigh, P.A., Chotai, A., Young, P.C., Vranken, E., and Berckmans, D. (2004). Cost effective combined axial fan and throttling valve control of ventilation rate. *IEE Proceedings: Control Theory and Applications*, 151, 577–584.
- Taylor, C.J., Pedregal, D.J., Young, P.C., and Tych, W. (2007). Environmental time series analysis and forecasting with the Captain Toolbox. *Environmental Modelling and Software*, 22, 797–814.
- Taylor, C.J. and Robertson, D. (2013). State-dependent control of a hydraulically-actuated nuclear decommissioning robot. *Control Eng. Practice*, 21, 1716–1725.
- Taylor, C.J. and Shaban, E.M. (2006). Multivariable proportional-integral-plus (PIP) control of the ALSTOM nonlinear gasifier simulation. *IEE Proceedings: Control Theory and Applications*, 153, 277–285.
- Taylor, C.J., Young, P.C., and Chotai, A. (2013). *True Digital Control: Statistical Modelling and Non-Minimal State Space Design*. John Wiley and Sons.
- Taylor, C.J., Young, P.C., Chotai, A., McLeod, A.R., and Glascock, A.R. (2000). Modelling and proportional-integral-plus control design for free air carbon dioxide enrichment systems. *Journal of Agricultural Engineering Research*, 75, 365–374.
- Young, P.C. (1978). A general theory of modeling for badly defined systems. In G.C. Vansteenkiste (ed.), *Modelling, Identification and Control in Environmental Systems*, 103–135. North Holland, Amsterdam.
- Young, P.C. (2006). New approaches to volcanic time series analysis. In H.M. Mader, S.G. Coles, C.B. Connor, and L.J. Connor (eds.), *Statistics in Volcanology*, 143–160. The Geological Society, London.
- Young, P.C. (2011). *Recursive Estimation and Time Series Analysis: An Introduction for the Student and Practitioner*. Springer.
- Young, P.C. (2015). Refined instrumental variable estimation: maximum likelihood optimization of a unified Box-Jenkins model. *Automatica*, 52, 35–46.
- Young, P.C. (2018). Data-based mechanistic modelling and forecasting globally averaged surface temperature. *International Journal of Forecasting*, 54, 314–335.
- Young, P.C. and Jakeman, A.J. (1979–1980). RIV methods of time-series analysis: Parts I, II and III. *International J. Control*, 29, 1–30; 29, 621–644; 31, 741–764.
- Young, P.C., Pedregal, D., and Tych, W. (1999). Dynamic harmonic regression. *J. of Forecasting*, 18, 369–394.
- Young, P.C. and Ratto, M. (2011). Statistical emulation of large linear dynamic models. *Technometrics*, 53, 29–43.
- Young, P.C. and Taylor, C.J. (2012). Recent developments in the Captain toolbox for Matlab. In *16th IFAC Symposium on System Identification (SYSID)*. Brussels.
- Young, P.C., Tych, W., and Taylor, C.J. (2009). The Captain Toolbox for Matlab. In *15th IFAC Symposium on System Identification (SYSID)*. Saint-Malo.