

### Welcome!

Welcome to the latest edition of the LECTern! The end of Lent Term signals a glut of field trips for several lucky undergraduates to the **Amazon, New York, Croatia, Paris** and **Doñana National Park, Spain**, but also the start of revision for end of year exams or finals. On the postgraduate side, everyone is now all under one roof in **The Graduate School for the Environment**, which coherently packages up the full gamut of LEC's research and external partners. This term has also seen our **alumni panel events**, where we were very pleased to welcome back several recent graduates to demystify post-university life and the world of work. Many thanks to all those who gave up their time to come back, and - as ever - we extend an invitation to any of you who would like to visit the department. Finally, we now have a new **BeyondLEC website** with blog posts about life after university and **several alumni profiles**, all put together by LEC Careers Intern Nicola Wylie (BSc Physical Geography, 2016). If you'd like to complete a profile, please **get in touch!**



Paul Young, Lecturer and LEC Careers and Alumni Officer.

### Your Details

Alumni ID:

Name:

Address (abbreviated):

Employment Information:

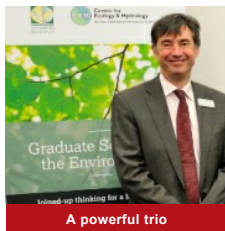
[Update your Lancaster University alumni record here](#)



Latest news



Latest events



A powerful trio

### £7.1 million R+D boost for North West Businesses

Students and businesses alike are set to benefit from a £7.1 million low-carbon research and development programme supporting small and medium-sized enterprises.

New projects will include innovative approaches to measuring air quality, energy generation from small-scale hydro installations and more.

[Read more](#)

### Alumni careers panel events

Lent Term has seen the return of a series of careers events aimed at inspiring our student's future.

Alumni from a broad range of sectors were invited back to share their highs, lows and valuable advice on moving into the workplace, with networking over drinks & nibbles.

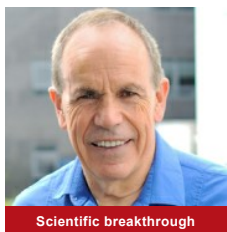
[Read more](#)

### Collaborative graduate school opens

A graduate school bringing together Lancaster Environment Centre, Rothamsted Research and the Centre for Ecology & Hydrology has been launched.

"Together we have a huge global network: our size and scale can make a real difference," notes Professor Kevin Jones (above).

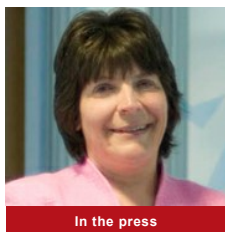
[Read more](#)



Scientific breakthrough



Exceptional contributions



In the press

### Protein boost for photosynthesis

Plant productivity sees increase of up to 20% through boosting three proteins involved in photosynthesis.

Though once doubted by the scientific community, new research proves that photosynthesis can be made more efficient, offering hope for food crops of the future. Professor Steve Long notes "If we don't do it now, we won't have this solution when we need it."

[Read more](#)

### Emeritus Professor Keith Beven praised

Recently retiring after nearly 30 years at Lancaster University, Keith Beven is celebrated in a special issue of the Hydrological Processes journal for his 'pathbreaking research.'

Beven's work has been cited more times than any other hydrologist, and he continues to inspire with his 10 books and more than 350 articles.

[Read more](#)

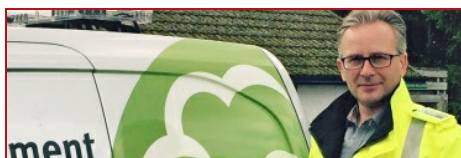
### Environmental risk factor: Alzheimer's disease

Professor Barbara Maher (above) leads discovery of toxic, bioreactive magnetite particles detected in human brains.

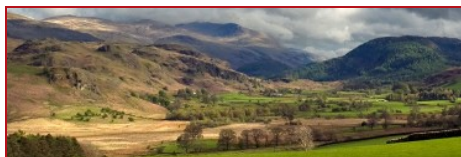
Abundance of distinctively spherical nanoparticles indicates formation from combustion sources including car exhausts. Environmental risk factor indicates possible link to Alzheimer's disease.

[Read more](#)

### Alumni Spotlight



Forming his love of hydrology at Lancaster University, John Curtin has been at the Environment Agency since it formed in 1996. The unparalleled work of Professor Keith Beven is particularly memorable. Curtin is now back collaborating with Lancaster University - read more [here](#).



The **Beyond LEC website** has been re-designed and updated, now with a mass of **alumni profiles** available to read.

Would YOU like to create an alumni profile, detailing your career so far and future aspirations? Email [BeyondLEC](#).

### Ways you can be involved #DiscoverLEC

Are you now an employer looking to host an internship? Would you like to benefit from up-to-date scientific skills and knowledge?

You can find more information on how to host an internship [here](#), or please contact our Student Employability Manager **Pam Pickles** (right).

Would you like to create an Alumni Profile? Do you have a story to share for our next Alumni newsletter, or the [BeyondLEC blog](#)?

To get involved, please send BeyondLEC an [email](#).



### New Faces

We are pleased to be welcoming the following new staff to LEC:

**Kirsti Ashworth** (Research Fellow), **Simon Batterbury** (Chair in Political Ecology), **Becca Burns**, **Laura Okeefe** and **Zoe Detko** (Innovation Fellows), **Qinbo Cheng**, **Filipe Machado Franca**, **Rhiannon Page** and **Nicholas Beuret** (Research Associates), **Juliana Da Silveira** (Data Analyst), **Georgia Faloone** and **Victoria Lund** (Project Administrative Support Officers), **Nikki Flook** (Envision Doctoral Training Partnership Administrator), **Annabel Rice** and **Carola Graf** (Research Technicians) **Jackie Hartley** (Outreach Assistant), **Marta Onate Gutierrez**, **Richard Randle-Boggis**, **Samuel Taylor**, **Robert Mills**, **Shane Rothwell**, **Andrew Hiron**, **Michael Hollaway** and **Victoria Janes** (Senior Research Associates), **Sally Anne Keith** (Lecturer in Marine Biology), **Amanda Nicholson** (Finance Administrator), **Steve Long** (Distinguished Professor In Crop Sciences), **Jacqueline Owen** (Part-Time Senior Teaching Associate), **Mariana Rufino** (Professor Of Agricultural Systems), **Amanda Sims-Novis** (Postgraduate Programmes Coordinator) and **Ian Wright** (Business Partnerships Officer).

### RefLECTION

We'd love to hear what you think of these newsletters and what you'd like to see in the future - please email [BeyondLEC](#).

### LEC's Keep in Touch:



LEC NEWS  
BeyondLEC BLOG  
BeyondLEC FACEBOOK  
UNIVERSITY NEWS  
ALUMNI OFFICE

Contact us  
Lancaster Environment Centre  
Lancaster University  
LA1 4YQ  
+44 (0)1524 510082  
[lec@lancaster.ac.uk](mailto:lec@lancaster.ac.uk)